



# MONTHLY MEMBERSHIP PROGRESS REPORT

District 14 G

Results as of: 12/31/2017

GMT: CINDY GREGG

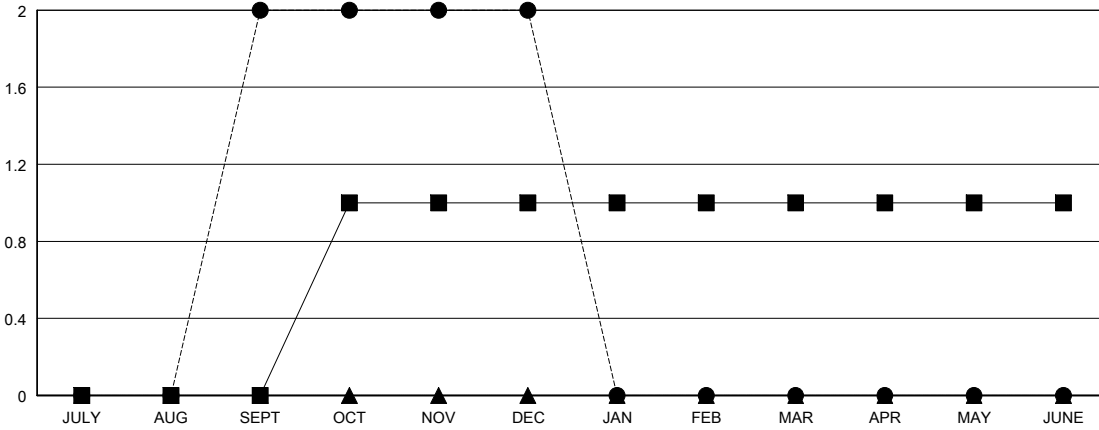
LOCATION PENNSYLVANIA

GMT CA

Clubs			
RESULTS FOR 2017-2018			
QUARTER	NEW CLUB GOAL	NEW CLUBS	DROPPED CLUBS
JULY/AUG/SEPT	0	2	0
OCT/NOV/DEC	1	0	0
JAN/FEB/MAR	0	0	0
APR/MAY/JUNE	0	0	0

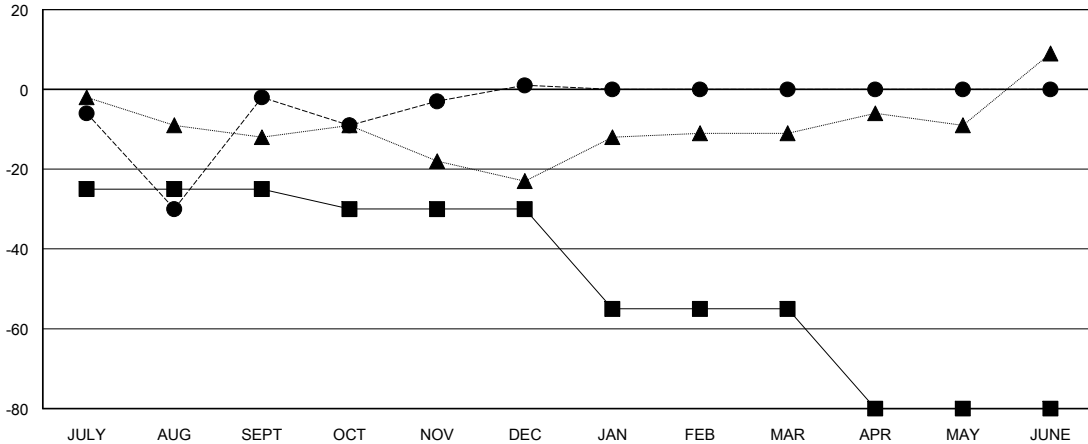
Members			
RESULTS FOR 2017-2018			
QUARTER	MEMBER GROWTH NET GOAL	MEMBER GROWTH ACTUAL	DROPPED MEMBERS ACTUAL (including transfers)
JULY/AUG/SEPT	-25	73	74
OCT/NOV/DEC	-5	38	33
JAN/FEB/MAR	-25	0	0
APR/MAY/JUNE	-25	0	0

GOALS AND ACTUAL NEW CLUBS CUMULATIVE



- - CURRENT YEAR GOALS FOR NEW CLUBS
- - CURRENT YEAR ACTUAL NEW CLUBS
- ▲ - LAST YEAR ACTUAL NEW CLUBS

GOALS AND ACTUAL MEMBERS CUMULATIVE



- - MEMBER GROWTH NET GOAL
- - MEMBER GROWTH ACTUAL
- ▲ - LAST YEAR MEMBERSHIP ACTUAL

DROPPED CLUBS: 0
------------------

24 CLUBS OF 59 ADDED 1 OR MORE NEW MEMBERS

GENDER DISTRIBUTION	
MALE	1,311 (77.21%)
FEMALE	387 (22.79%)
Women Percentage Fiscal Year Goal: 22%	

DROPPED MEMBERS	
DECEASED	16
CLUB CANCELLED	0
OTHER	91
<b>TOTAL</b>	<b>107</b>

[CLICK HERE FOR CUMULATIVE MEMBERSHIP DATA](#)

TOTAL FAMILY UNIT MEMBERS	331
FAMILY MEMBERS PAYING HALF DUES	169